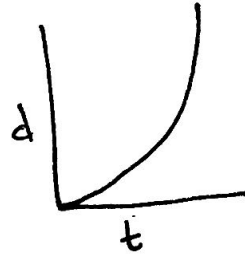


Notes - Distance - Time Graphs

Increasing Distance



Constant speed

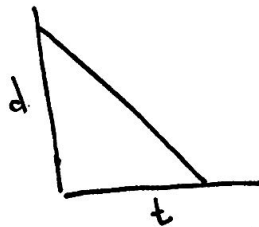


speeding up

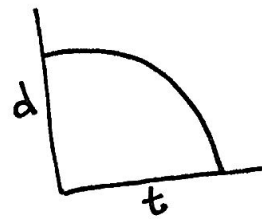


slowing down

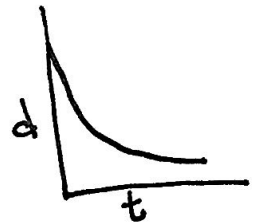
Decreasing Distance



constant speed

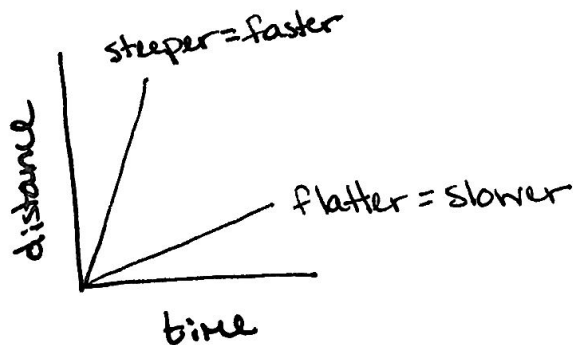


speeding up

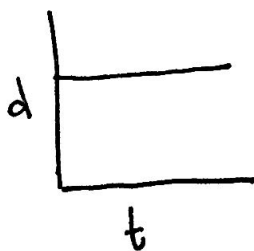


slowing down

Speed = $\frac{\Delta \text{distance}}{\Delta \text{time}}$ = slope of the line on a distance-time graph!

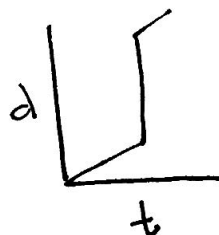


Horizontal lines



speed = 0
stopped/
at rest

Vertical lines



↳ impossible!
Can't be 2 places
at once or travel
distance in zero
time!